

FENIX Classique

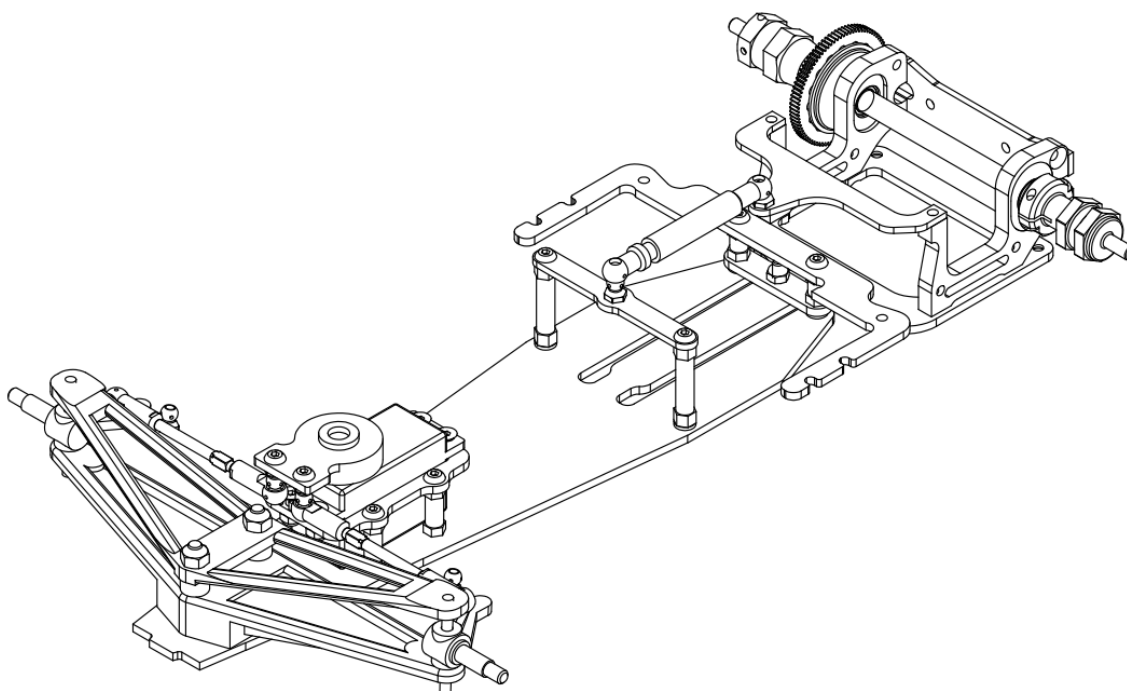
FENIX F1 70

FENIX

F1 70

Rev. 0.6

May 2020



Rev. 0.0

F1-70 is an high-competition, high-quality, 1/10-scale model car intended for persons aged 16 years and older with previous experience building and operating RC model racing cars. This is not a toy; it is a precision racing model. This model racing car is not intended for use by beginners, inexperienced customers, or inexperienced racers or by children without direct supervision of a responsible, knowledgeable adult.

Before building and operating your F1-70, YOU MUST read through all of the operating instructions and instruction manual and fully understand them to get the maximum enjoyment and prevent unnecessary damage. Read carefully and fully understand the instructions before beginning assembly.

Contents of the box may differ from pictures. In line with our policy of continuous product development, the exact specifications of the kit may vary without prior notice.

Take appropriate safety precautions prior to operating this model. You are responsible for this model's assembly and safe operation! Please read the instruction manual before building and operating this model and follow all safety precautions

IMPORTANT NOTES – GENERAL

- This product is not suitable for children under 16 years of age without the direct supervision of a responsible and knowledgeable adult.
- Carefully read all manufacturers warnings and cautions for any parts used in the construction and use of your model.
- Assemble this kit only in places away from the reach of very small children.
- First-time builders and users should seek advice from people who have building experience in order to assemble the model correctly and to allow the model to reach its performance potential.
- Exercise care when using tools and sharp instruments.
- Take care when building, as some parts may have sharp edges.
- Keep small parts out of reach of small children. Children must not be allowed to put any parts in their mouth, or pull vinyl bag over their head.
- Read and follow instructions supplied with paints and/or cement, if used (not included in kit).
- Immediately after using your model, do NOT touch equipment on the model such as the motor and speed controller, because they generate high temperatures. You may seriously burn yourself seriously touching them.
- Follow the operating instructions for the radio equipment at all times.
- Do not put fingers or any objects inside rotating and moving parts, as this may cause damage or serious injury as your finger, hair, clothes, etc. may get caught.
- Be sure that your operating frequency is clear before turning on or running your model, and never share the same frequency with somebody else at the same time. Ensure that others are aware of the operating frequency you are using and when you are using it.
- Use a transmitter designed for ground use with RC cars. Make sure that no one else is using the same frequency as yours in your operating area. Using the same frequency at the same time, whether it is driving, flying or sailing, can cause loss of control of the RC model, resulting in a serious accident.
- Always turn on your transmitter before you turn on the receiver in the car. Always turn off the receiver before turning your transmitter off.
- Keep the wheels of the model off the ground when checking the operation of the radio equipment.
- Disconnect the battery pack before storing your model.
- When learning to operate your model, go to an area that has no obstacles that can damage your model if your model suffers a collision.
- Remove any sand, mud, dirt, grass or water before putting your model away.
- If the model behaves strangely, immediately stop the model, check and clear the problem.
- To prevent any serious personal injury and/or damage to property, be responsible when operating all remote controlled models.
- The model car is not intended for use on public places and roads or areas where its operation can conflict with or disrupt pedestrian or vehicular traffic.
- Because the model car is controlled by radio, it is subject to radio interference from many sources that are beyond your control. Since radio interference can cause momentary loss of control, always allow a safety margin in all directions around the model in order to prevent collisions.
- Do not use your model:
 - Near real cars, animals, or people that are unaware that an RC car is being driven.
 - In places where children and people gather
 - In residential districts and parks
 - In limited indoor spaces
 - In wet conditions
 - In the street
 - In areas where loud noises can disturb others, such as hospitals and residential areas.
 - At night or anytime your line of sight to the model may be obstructed or impaired in any way.

To prevent any serious personal injury and/or damage to property, please be responsible when operating all remote controlled models. Failure to follow these instructions will be considered as abuse and/or neglect.

We have made every effort to make these instructions as easy to understand as possible.

However, if you have any difficulties, problems, or questions, please do not hesitate to contact the Fenix support team at racing@fenixwaterjet.com . Also, please visit our Web site

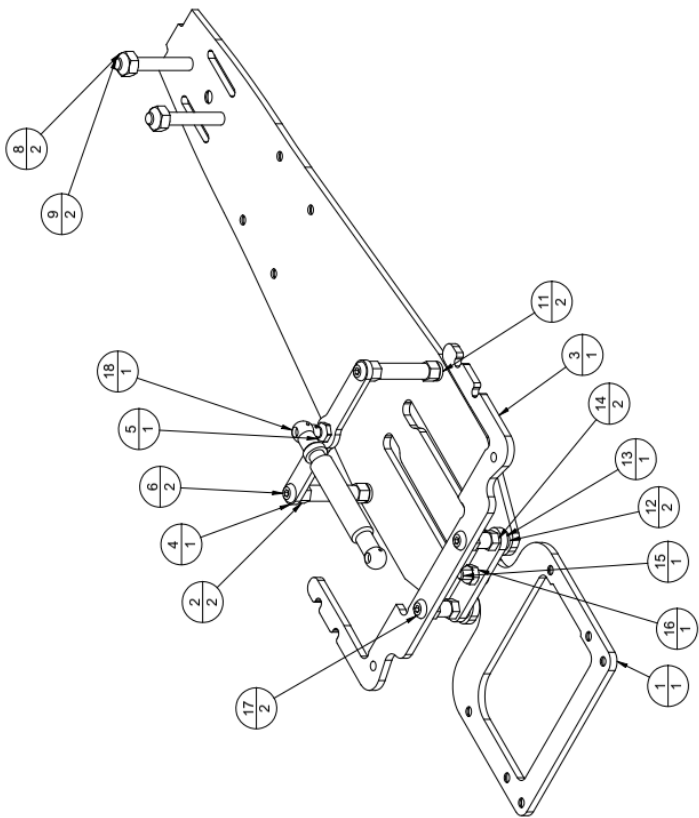
at www.Fenix-racing.com or www.fenixracingshop.com or <https://www.facebook.com/FenixRacing.it/>

the latest updates, set-up information, option parts, and many other goodies. We pride ourselves on taking excellent care of our customers.

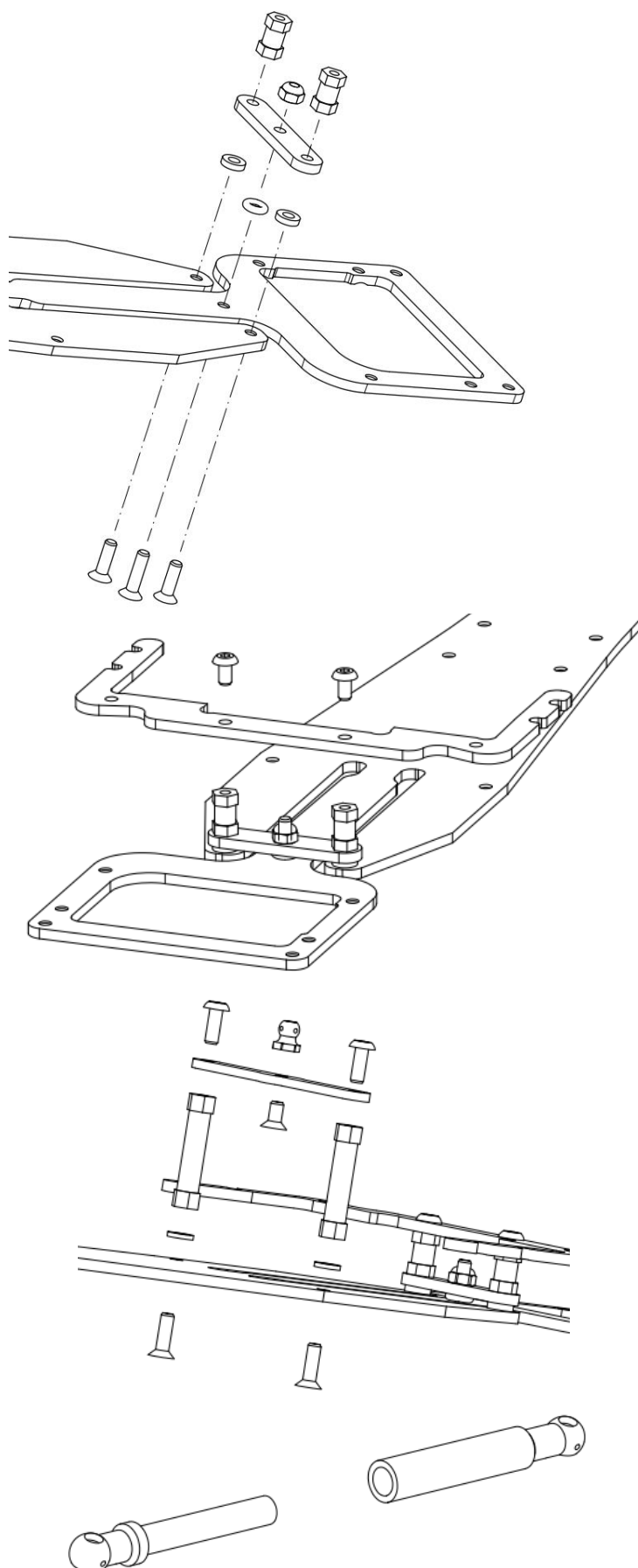
Just a quick note.... Read the manual “before” and not after....

Bag A

Main chassis



Numero oggetto	Numero documento	Titolo	Quantità
1	F2-1	F1-70 Chassis	1
2	FX0054	Post 76mm	2
3	F2-2	Formula 2 Battery Holder	1
4	H55	Classique Central shock	1
5	FX-FU48	uniball 6,6	1
6	Hw003	Screw - M3,8 - Hex Socket Button	2
7	Hw012	Screw - M3,6 - Hex Socket Countersunk	1
8	Hw028	M4 nut - standard	2
9	Hw021	Screw - M4 x 35 - Hex Socket Countersunk	2
10	Hw004	Screw - M3,10 - Hex Socket Countersunk	3
11	FX0023	Alu Shim 1mm	2
12	FX0063	Alu Shim 1,5mm	2
13	F2-3	Oring Plate	1
14	FX0045	10mm Alu post	2
15	Hw026	Screw - M3 x 12 - Hex Socket Countersunk	1
16	Hw002	M3 Self Locking nut - standard	1
17	Hw008	Screw - M3,6 - Hex Socket Button	2
18	H538	Main Damper Classique B	1
19	H53A	Main Damper Classique A	1
20	ORING 2012 - 006	ORING 2012 - ORING 006 - OYSGERIN	1



Start with the HW026 M3x12 countersunk and insert it in the central hole of the "T-bar", slide the o-ring over it.

Insert the 2 HW004 M3x10 countersunk in the side holes.

Slide the 2 FX0063 1.5mm shims over.

Insert the F2-3 plate over.

Tight the M3 Nylock over the central HW026 and the 2 x FX1045 over the HW004.

Rear suspension responsiveness can be tuned by tighten the HW026.

Fix the F2-2 using 2 x HW008 M3 x 6 button screw

Insert 2 x HW004 M3x10 countersunk screws and slide the FX0023 1mm shims over, secure them with the 2 x FX0054 posts.

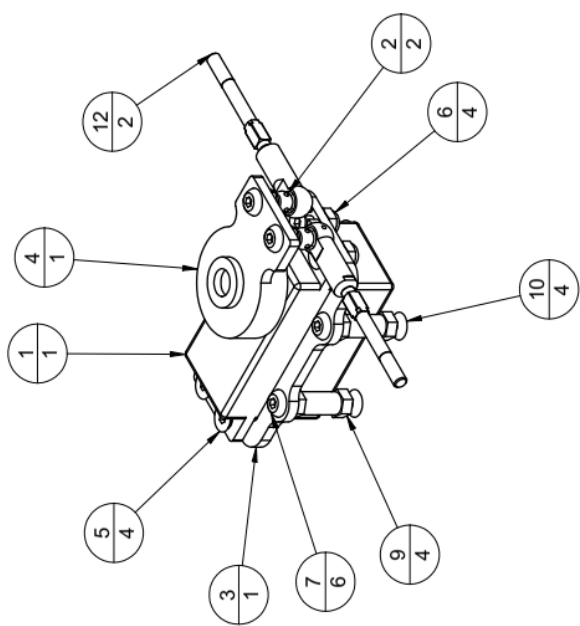
Fix the 4.8mm male stud to the F2-7 shock holder using 1 x HW012 M3x6 countersunk screw.

Fix the group to the post using 2 x HW003 M3x8 button screws.

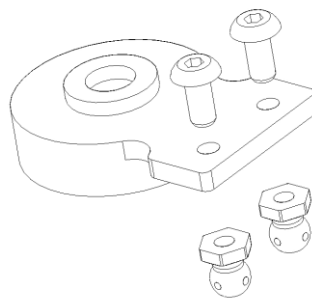
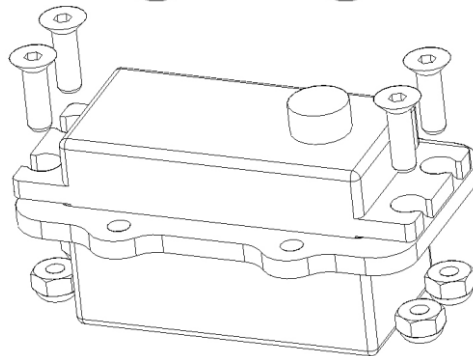
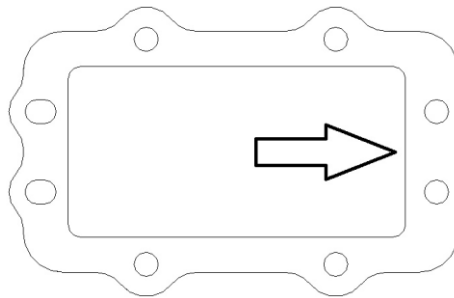
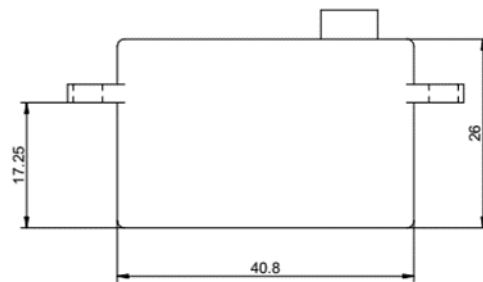
Put some 100K syrup over the piston and assembly the damper. Keep it for later installation.

Bag B

Steering ass.y



Numero oggetto	Numero documento	Titolo	Quantità
1	servo	Servo Fenix	1
2	FX-FU48	uniball 6.6	2
3	HS2	Classique Servo holder	1
4	Kim #124	Servo Saver Kimbrough	1
5	HW004	Screw - M3*10 - Hex Socket Countersunk	4
6	HW002	M3 Self Locking nut - standard	4
7	HW003	Screw - M3*8 - Hex Socket Button	6
9	TUHT049	COLONNINA 15	4
10	HW007	Screw - M3*8 - Hex Socket Countersunk	4
11*	FX0037	Ball Joint	4
12	FX0026-T	Mistral front turnbuckle Steering - Titanium	2



Servo is not included,
F1-70 need a low
profile servo.

Note the dimension of
the servo suggested

Take the HS2 servo
holder.

Note: the flat area goes
to the front of the
model

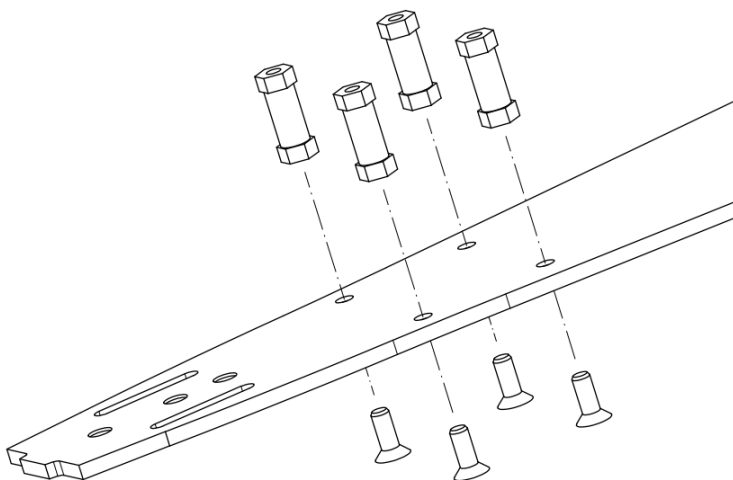
Insert the low profile
servo in the servo
holder.

Fix it with using 4 x
HW004 screws and 4
HW002 M3 Nylock nut

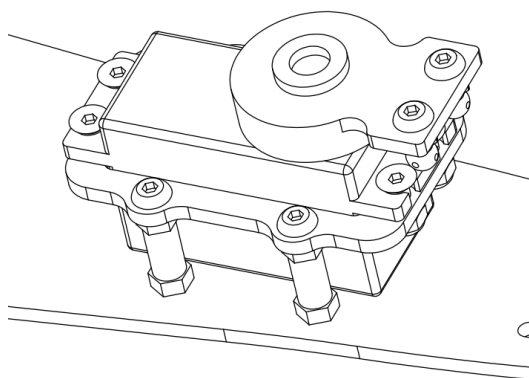
Insert 2 x HW003 into
the servo saver and
screw 2 x FUFX48.

Insert the servo saver
over the servo and fix it
using the proper screw
provided in the servo
box.

Fix the 4 x FX1049 15mm post to the chassis using 4 x HW007 M3x8 countersunk.



Install the servo group using 4 x HW003 M3x8 Button

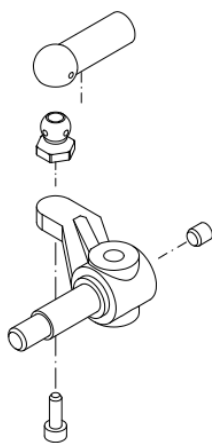


Open Bag B1

Steering hubs.

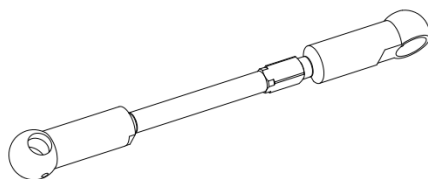
Use 1 x HW0014 M2x 6 screw to fix the 19804495 uniball.

Use the Grey ball joint 53601 over the 19804495 uniball.



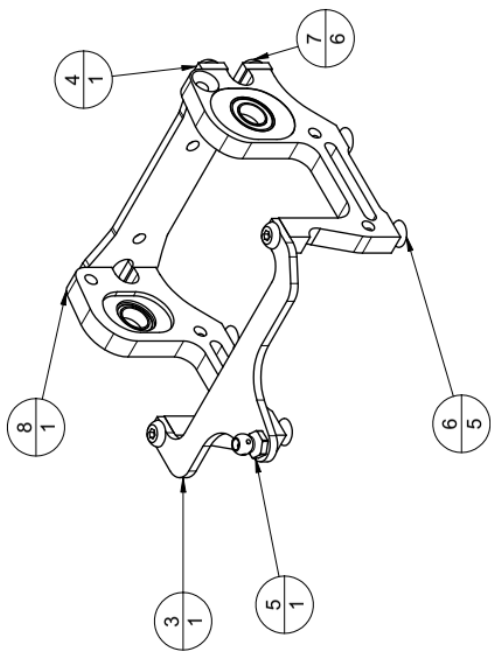
Grub screw M3x3 can be used to better secure the steering over the kingpin. Provided plastic shims can be used to set the front ride height.

Assembly 2 steering turnbuckles.

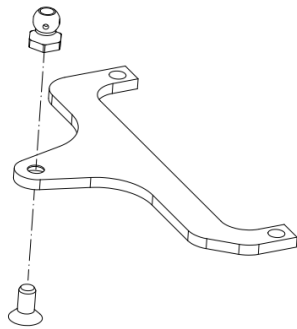


Bag C

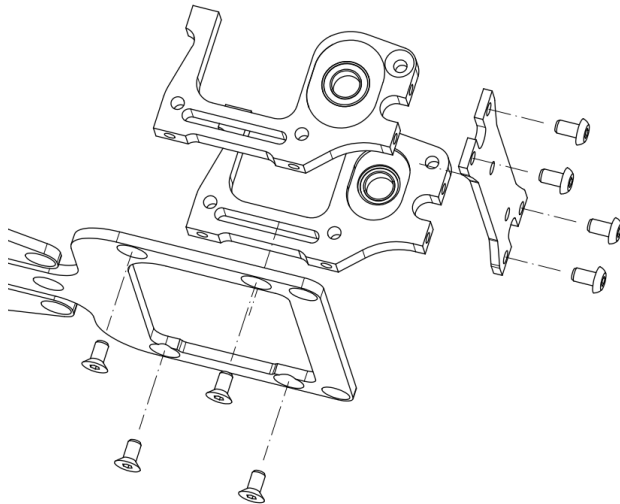
Motor holder



Numero oggetto	Numero documento	Titolo	Quantità
1*	F2-1	F1-70 Chassis	1
3	F24-shock	F2-4- SHOCK HOLDER	1
4	F2-5	Rear brace - wing stay	1
5	FX-FU48	uniball 6,6	1
6	HW012	Screw - M3*6 - Hex Socket Countersunk	5
7	HW008	Screw - M3*6 - Hex Socket Button	6
8	FX050-A	MOTOR HOLDER - A	1
9*	FX0048	Ride height adjuster - (for FX050 motor holder)	2
10*	FX14-38	Ball Bearing Flanged 3/8"x1/4"	2
11*	FX050-B	MOTOR HOLDER B	1

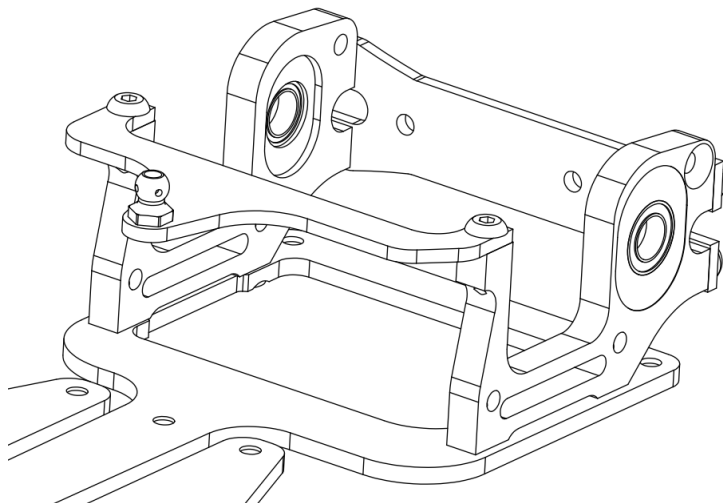


Using the HW012 M3x6 countersunk screw, fix the FX-FU48 male stud to the F2-4 shock holder



Assembly the motor holders to the chassis using 4 x HW012 M3x6 countersunk.

Fix the F2-5 wing holder to the holders using 4 x HW008 M3x6 button.



Install the shock holder on the motor holder using 2 x HW008 M3x6 button.

Assembly Notes

Differential:

Please refer to proper manual for Fenix Sphere diff or Gear diff, according your version of F1-70.

Chassis:

Fenix Classique F1-70 is available with 3 different chassis.

Tamiya F103/F104 and Xray X1 are available only as Transformation kit.

